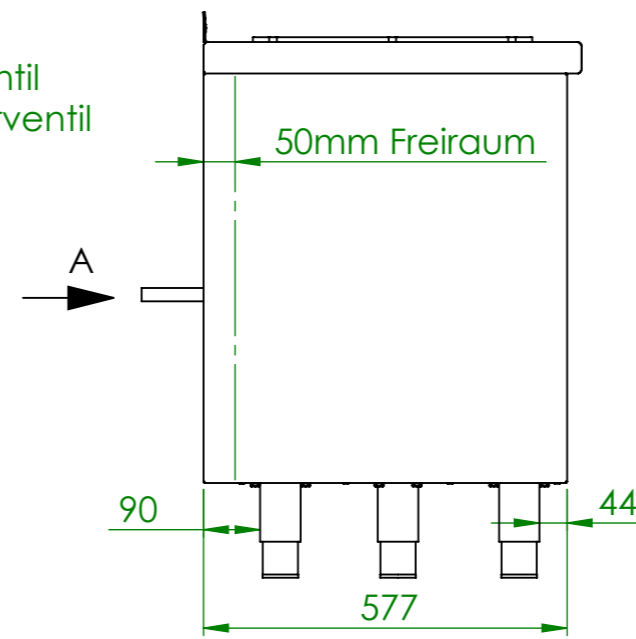
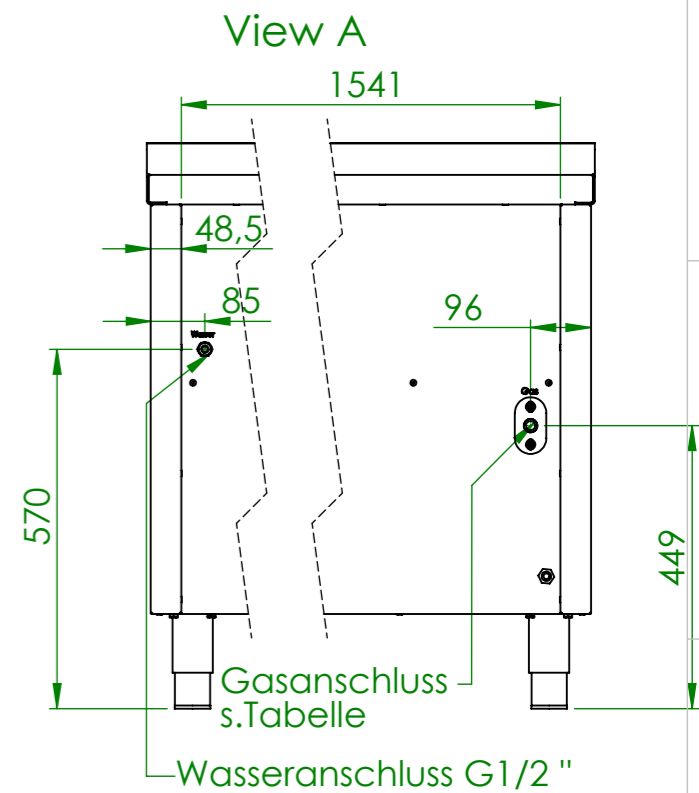


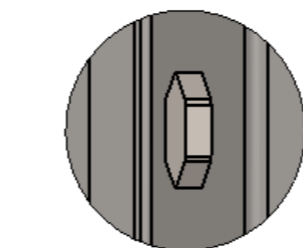
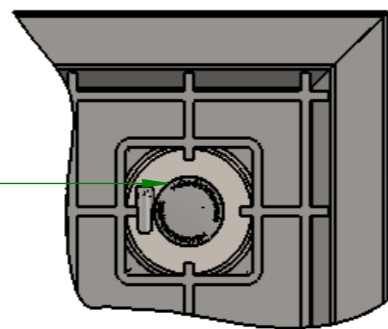
Gasventil
Wasserventil



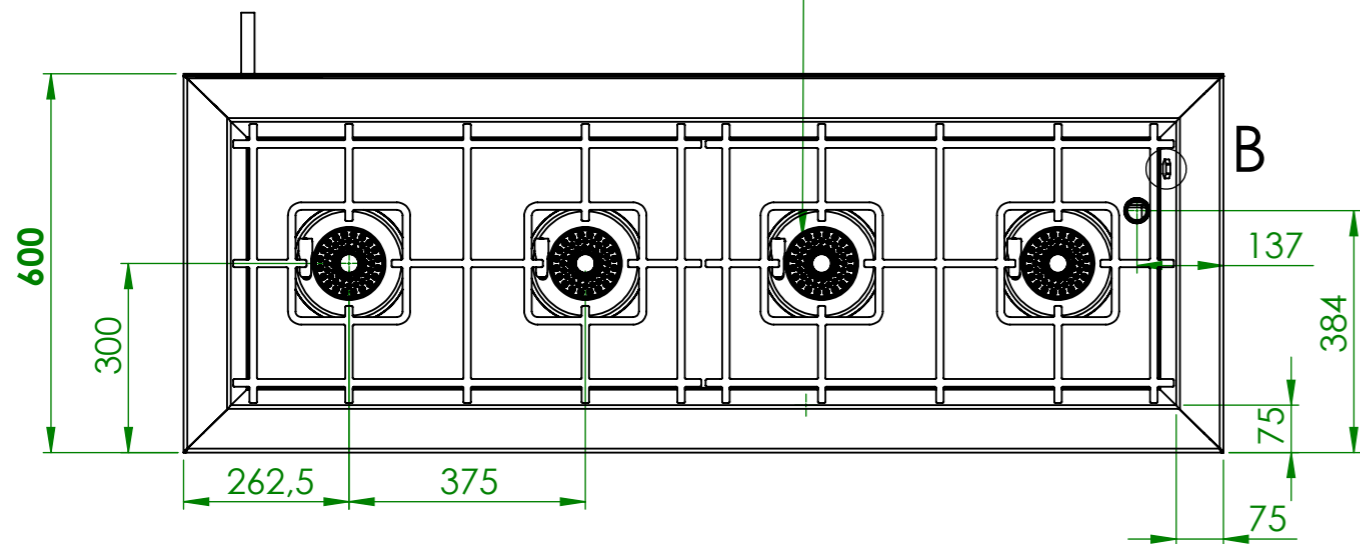
B
SCALE 1 : 2



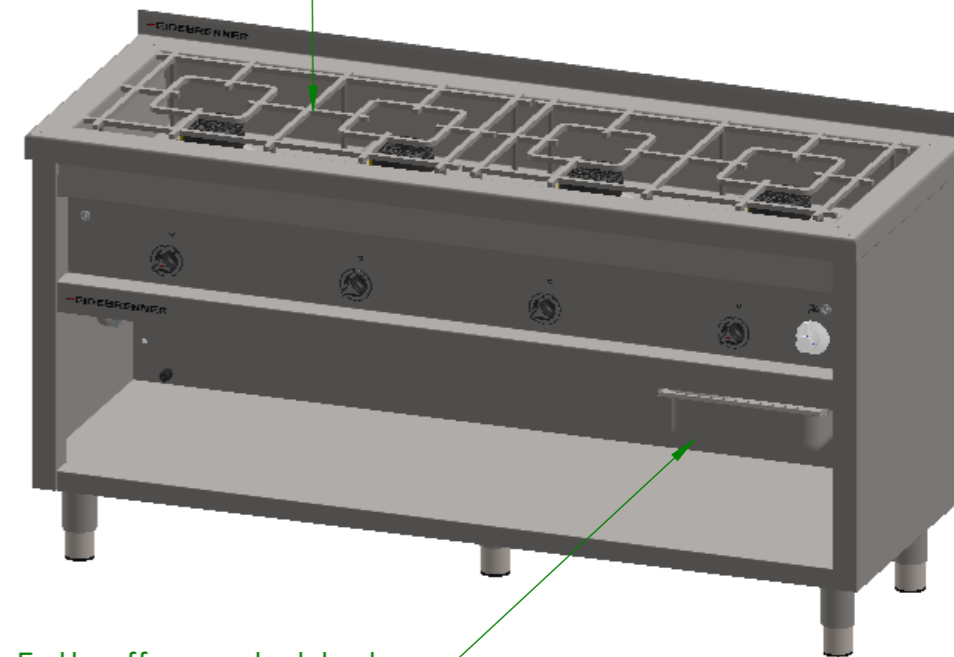
4x KochStellenBrenner für **GLBDC**
4x WarzenBrenner für **GLKJC**



Wassereinlaufdüsen



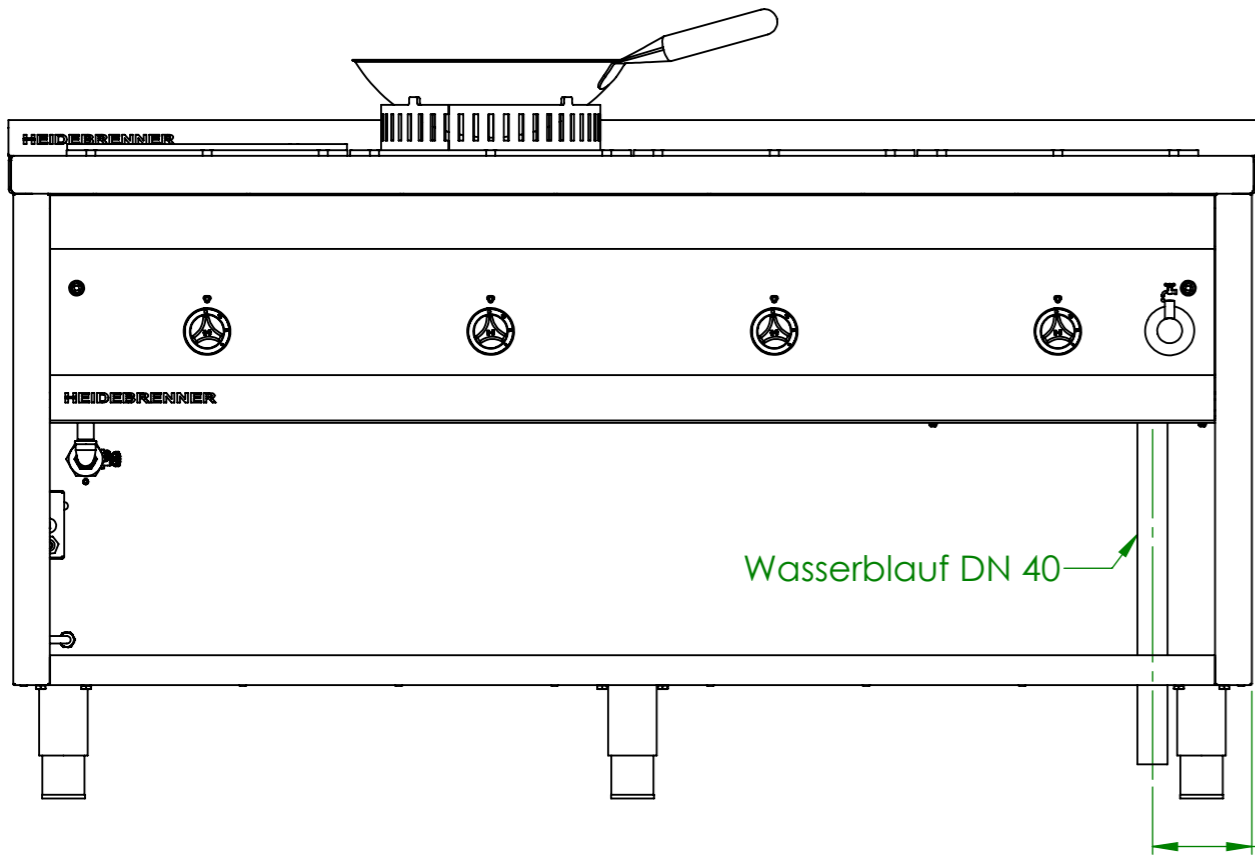
Doppelrost



Fettauffangschublade

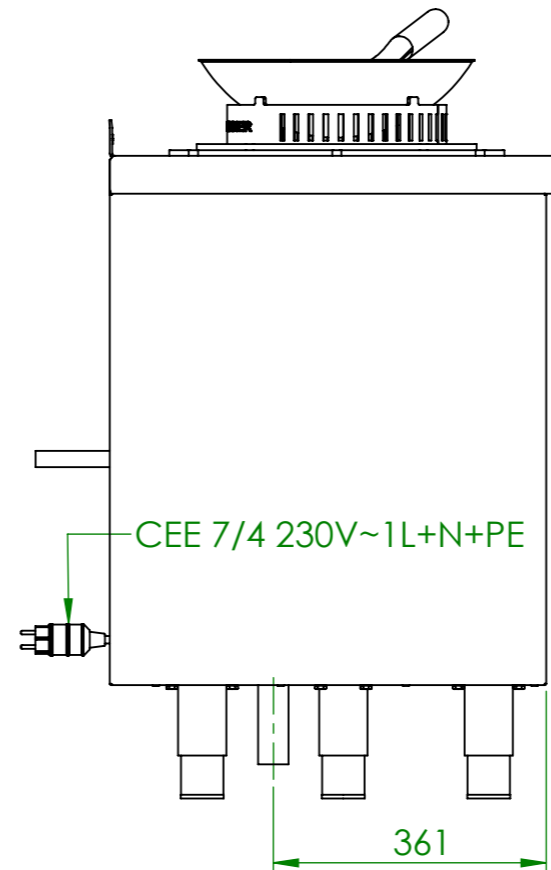
Verwendungsbereich 1650x600x850	Toleranz nach DIN ISO 2768-mK	Oberflächen DIN ISO 1302	Maßstab: 1:12	Gewicht: 146 kg
Name		Datum		
Bearb. M.G.		17.12.2020		
Werkstoff 1.4301 AISI 304		Gas-Range „MONTANA“		
HEIDEBRENNER		GLB_C		A3

Art.Nr	KochStellen- Brenner	WarzenBrenner	P[kW]	Pges [kW]	Volumenstrom V[m3/h]	Gasanschluß [Zoll]	Länge Verbrauchsleitung [m] delta p=0.6mBar
GLBDC	4	-	5,8	23,2	2,47	3/4	15
GLBKC	-	4	8,7	34,8	3,7	1	>20



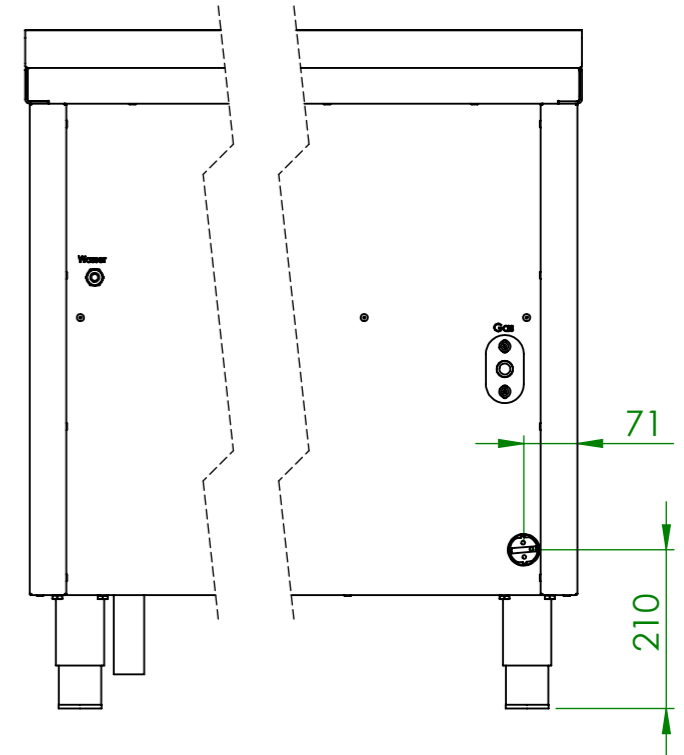
Wasserlauf DN 40

131



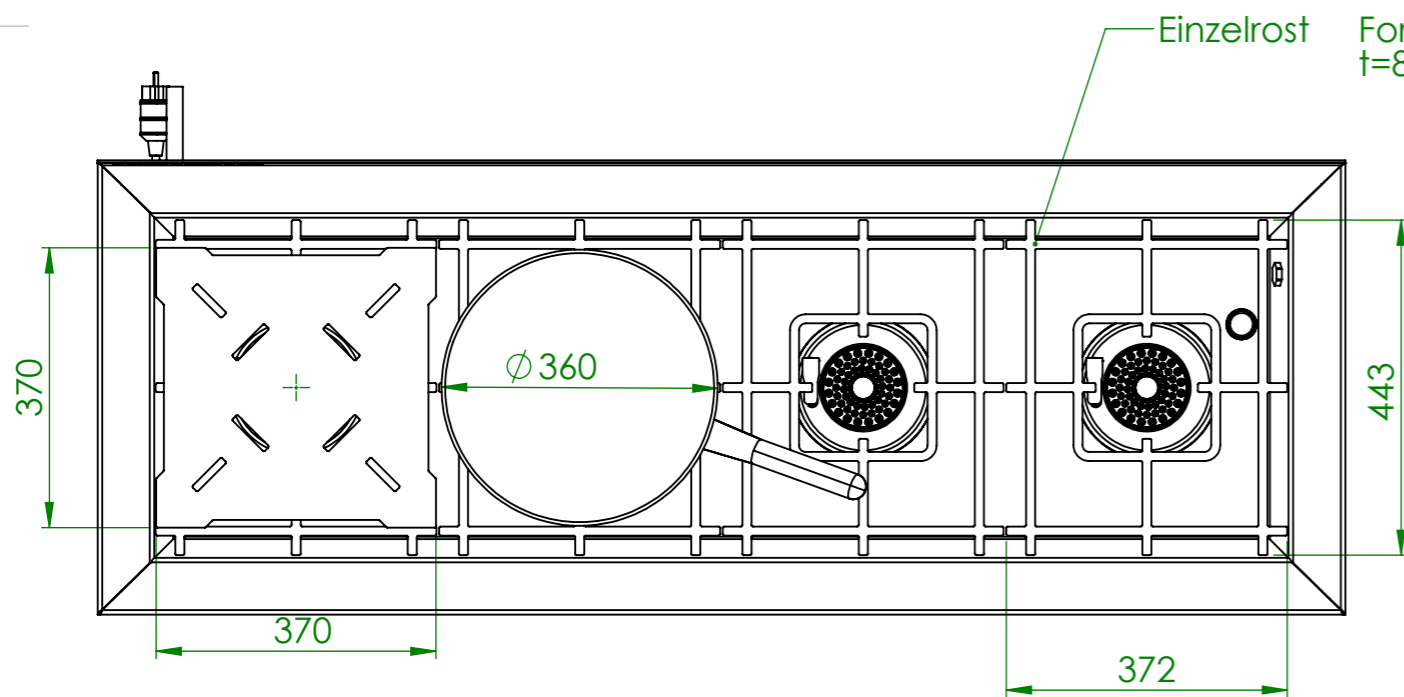
CEE 7/4 230V~1L+N+PE

361



71

210



Einzelrost

Fortkochplatte 370x370
t=8mm

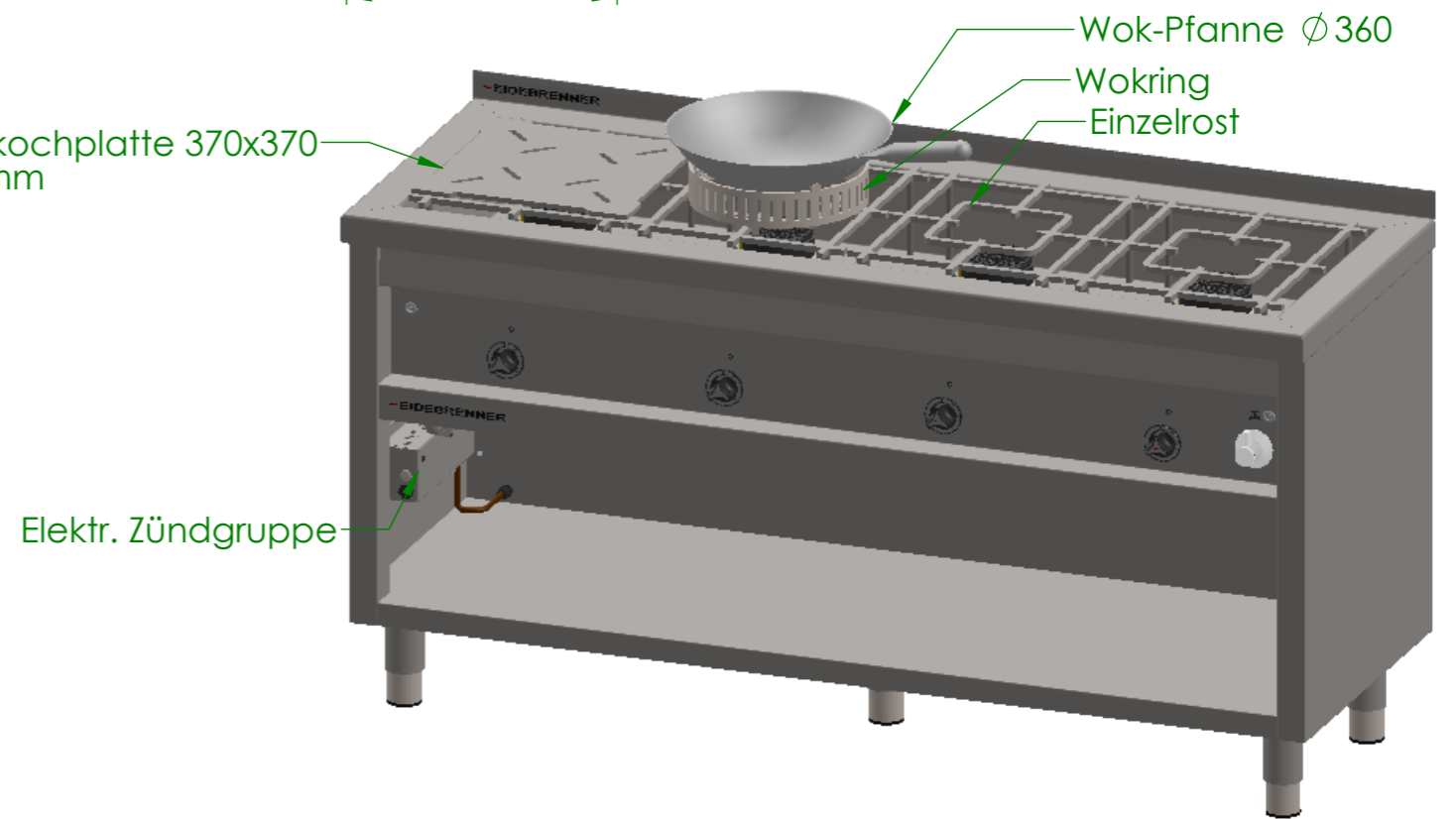
Ø 360

370

370

372

443



Wok-Pfanne Ø 360

Wokring

Einzelrost

Elektr. Zündgruppe

Verwendungsbereich 1650x600x850	Toleranz nach DIN ISO 2768-mK	Oberflächen DIN ISO 1302	Maßstab: 1:10 Werkstoff 1.4301 AISI 304	Gewicht: 159 kg
Name	Datum	Gas-Range „MONTANA“		
Bearb. M.G.	17.12.2020			
HEIDEBRENNER		GLB_C + Zubehör		A3