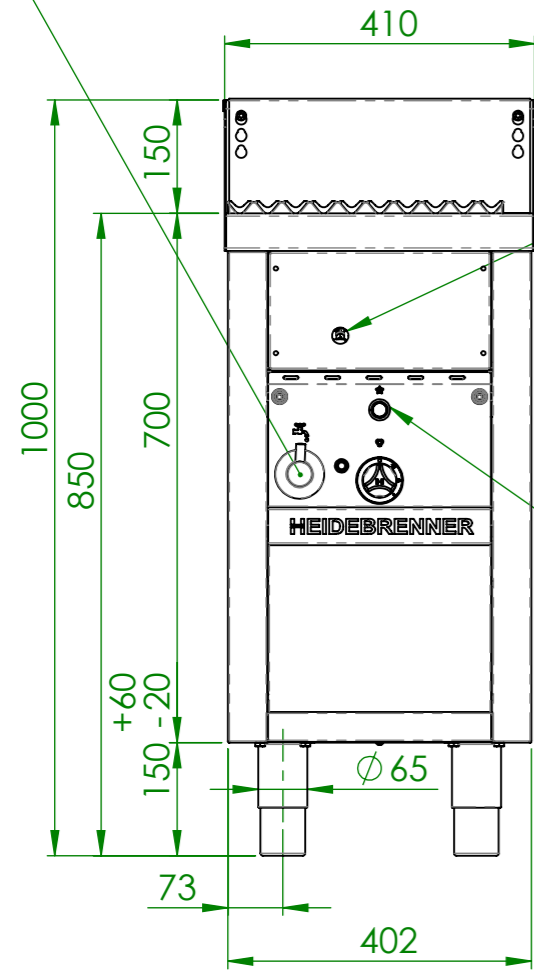


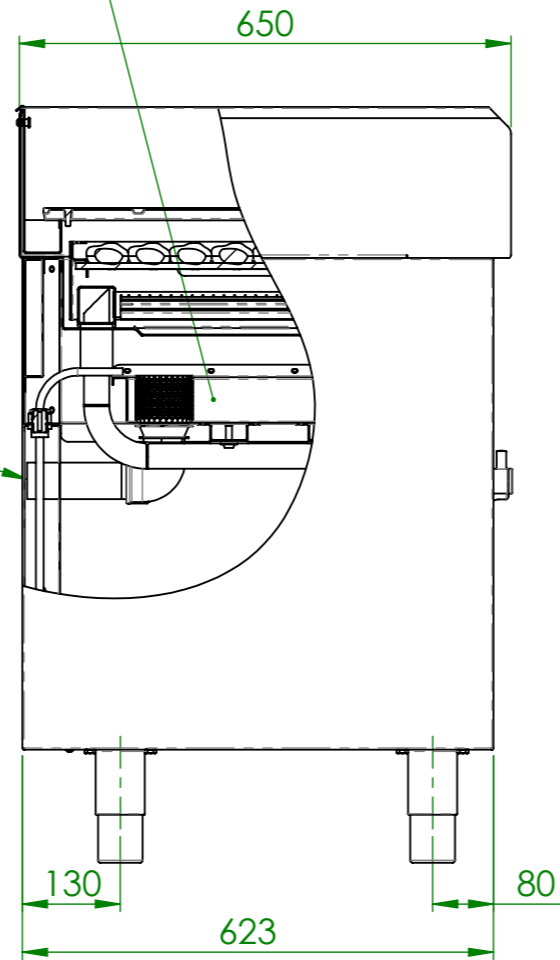
Befüllen der Wasserwanne mit Wasser



Schauloch Zündbrenner

Elektrozündung

Wasser und Schmutzwanne

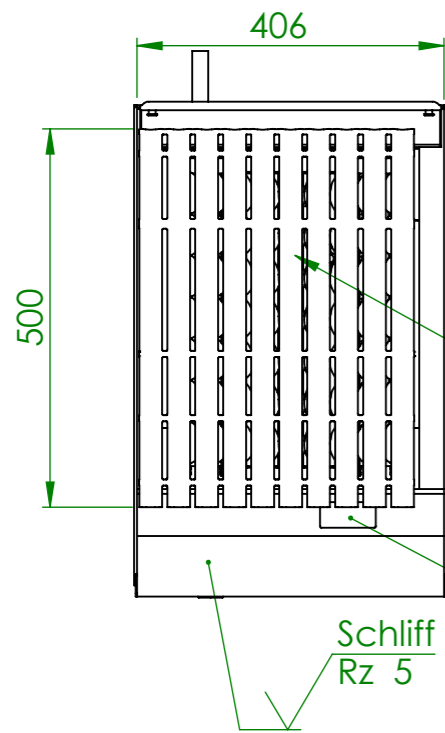
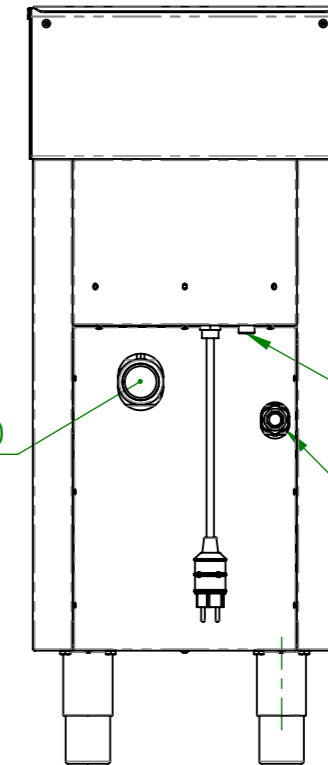


Rückwand ist 50mm eingerückt

Wasserabfluss DN50

Wasserzulauf 1/2"

Gasanschluss G1/2"



Heizzonen je P=9.3 kW

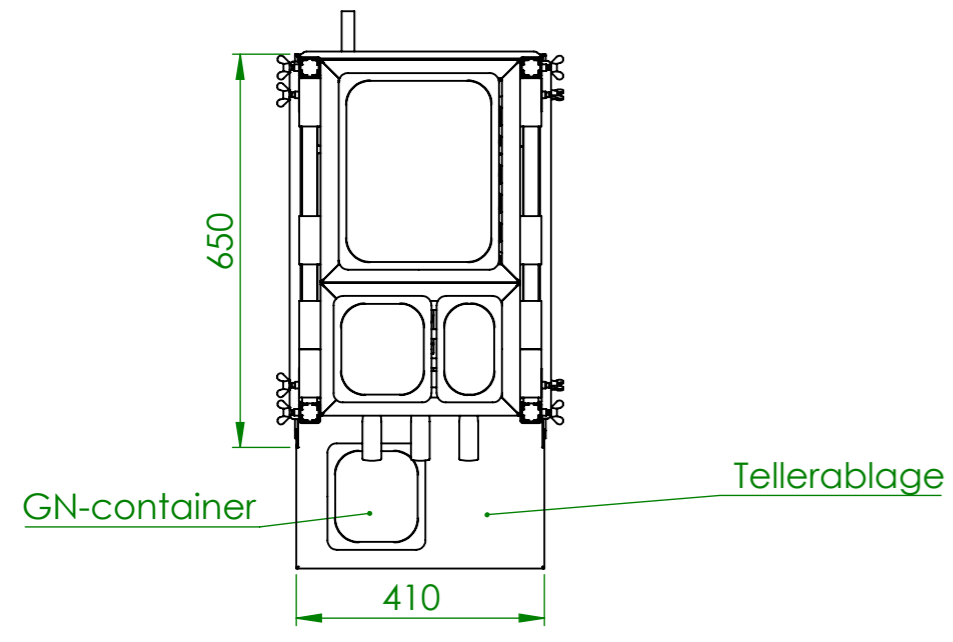
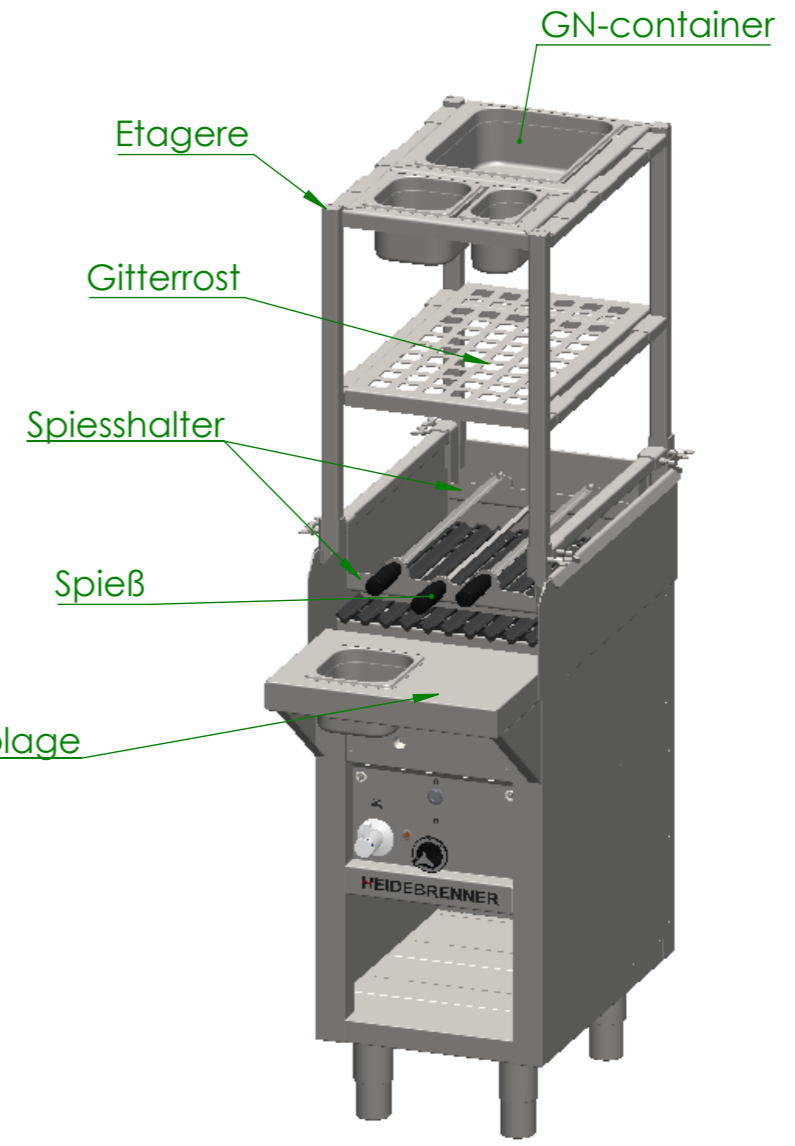
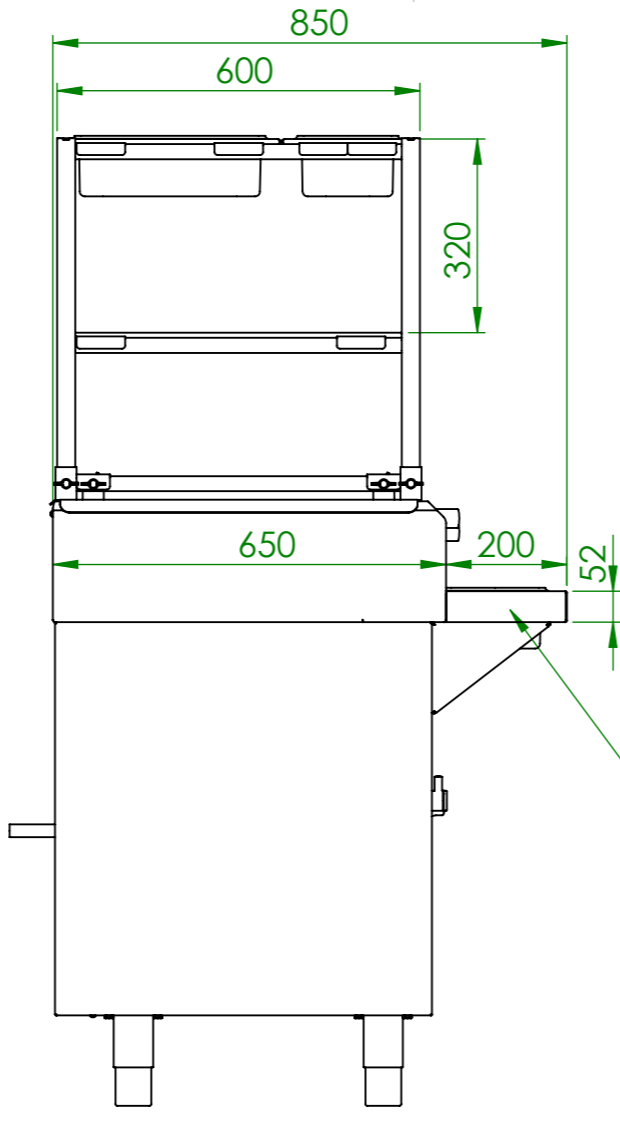
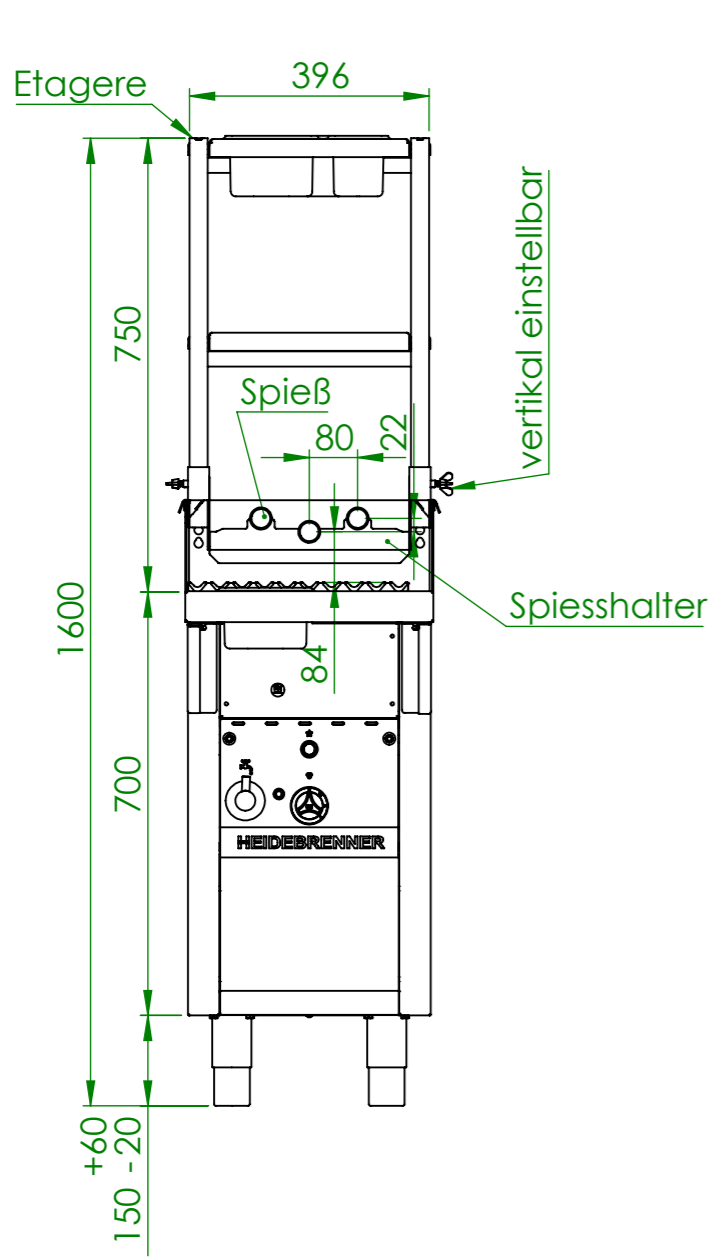
Fettablauf

Schliff Rz 5



| Artikel Nr. | P [kW] | Pges [kW] | Volumenstrom V [m3/h] | Gasanschluß [Zoll] | Länge Verbrauchsleitung [m] delta p=0.6mBar |
|-------------|--------|-----------|-----------------------|--------------------|---|
| GMEA | 1x9.3 | 9.3 | 0.98 | 1/2" | 6 |

| | | | | |
|------------------------------------|----------------------------------|---------------------------------|-----------------------------------|-------------------|
| Verwendungsbereich 410x1000x650 | Toleranz nach DIN ISO 2768-mK | Oberflächen DIN ISO 1302 | Maßstab: 1:10 Werkstoff 1.4301 | Gewicht: 79.46 kg |
| Name | Datum | Gas Lavastein-Grill FILICUDI | | |
| Bearb. M.B. | 15.07.2020 | | | |
| HEIDEBRENNER | | GMEA | | A3 |



| | | | | |
|------------------------------------|----------------------------------|-------------------------------------|------------------------------|-----------------|
| Verwendungsbereich 740x850x1600 | Toleranz nach DIN ISO 2768-mK | Oberflächen DIN ISO 1302 | Maßstab: 1:12.5 | Gewicht: 104 kg |
| | | | Werkstoff 1.4301 AISI 304 | |
| Name | Datum | Gas Lavastein-Grill FILICUDI | | |
| Bearb. M.B. | 15.07.2020 | | | |
| HEIDEBRENNER | | GMEA | | A3 |